

*to accompany Australian Standard 2700—1996*

This card should not be

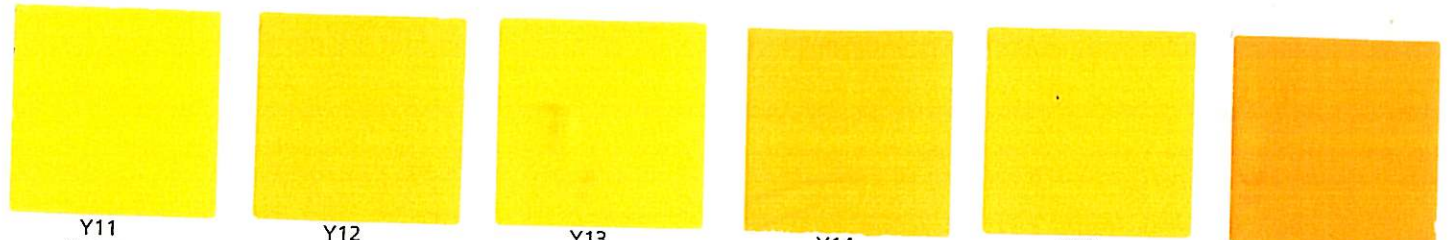
used for colour matching.

Colours for colour matching

should be selected from the fandeck

AS 2700S—1996 or may be

purchased as individual colours.



Y11  
Canary

Y12  
Wattle

Y13  
Vivid Yellow

Y14  
Golden Yellow

Y15  
Sunflower

Y16  
Inca Gold



Y21  
Primrose



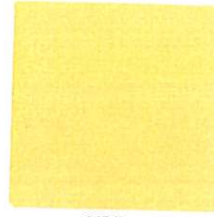
Y22  
Custard



Y23  
Buttercup



Y24  
Straw



Y25  
Deep Cream



Y26  
Homebush Gold



Y31  
Lily Green



Y32  
Flummery



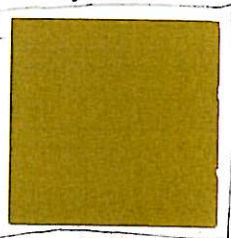
Y33  
Pale Primrose



Y34  
Cream



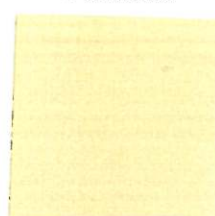
Y35  
Off White



Y41  
Olive Yellow



Y42  
Mustard



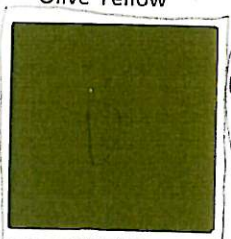
Y43  
Parchment



Y44  
Sand



Y45  
Manilla



Y51  
Bronze Olive



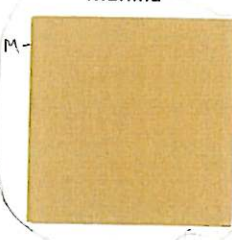
Y52  
Chamois



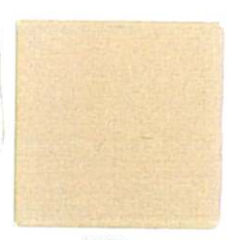
Y53  
Sandstone



Y54  
Oatmeal



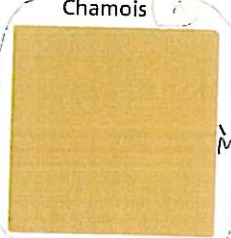
Y55  
Deep Stone



Y56  
Merino



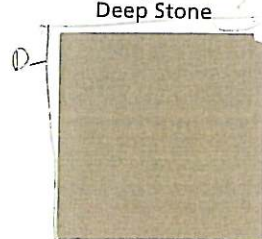
Y61  
Black Olive



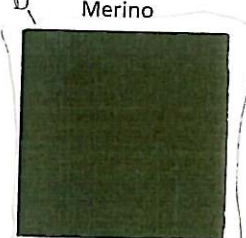
Y62  
Sugar Cane



Y63  
Khaki

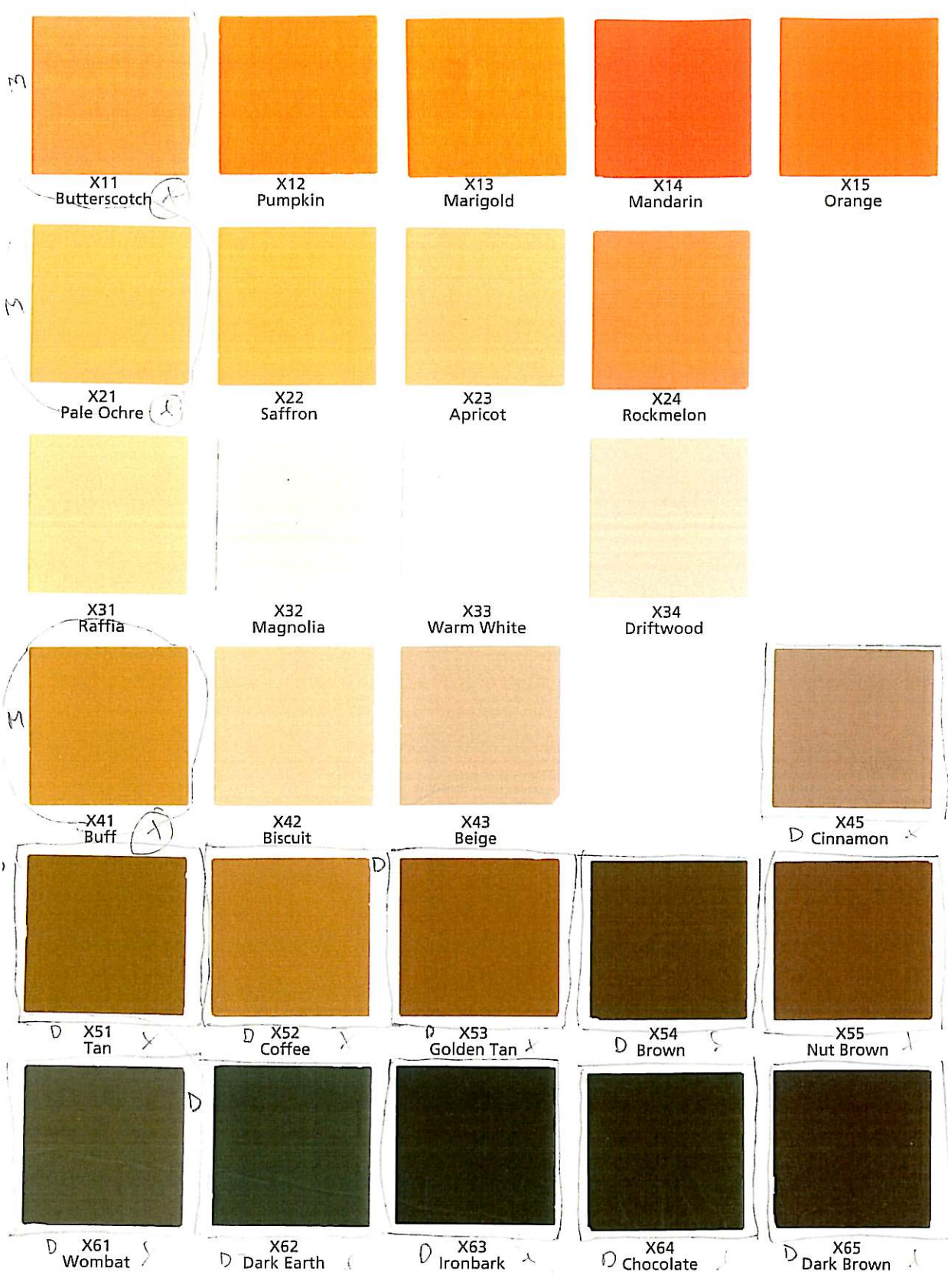


Y65  
Mushroom

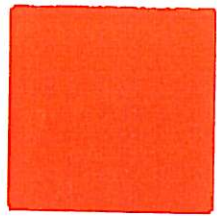


Y66  
Mudstone

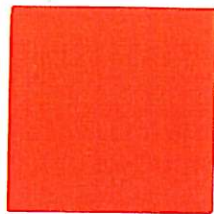
The Y (Yellow) Group



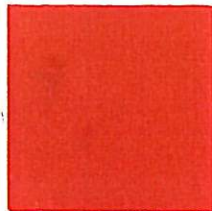
The X (Yellow-Red) Group



R11  
International Orange



R12  
Scarlett



R13  
Signal Red



R14  
Waratah



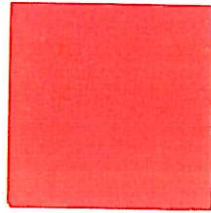
R15  
Crimson



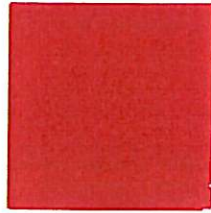
R21  
Tangerine



R22  
Homebush Red



R23  
Lollipop



R24  
Strawberry



R25  
Rose Pink



R32  
Apple Blossom



R33  
Ghost Gum



R34  
Mushroom Pink



R35  
Deep Rose



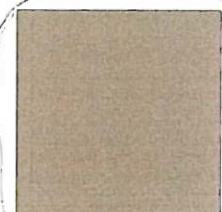
R41  
Shell Pink



R42  
Salmon Pink



R43  
Red Dust



R44  
Possum



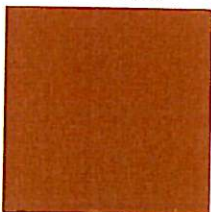
R45  
Ruby



R51  
Burnt Pink



R52  
Terra Cotta



R53  
Red Gum



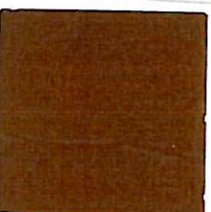
R54  
Raspberry



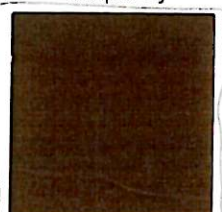
R55  
Claret



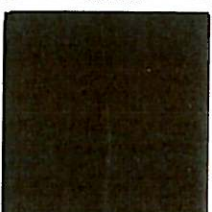
R62  
Venetian Red



R63  
Red Oxide



R64  
Deep Indian Red

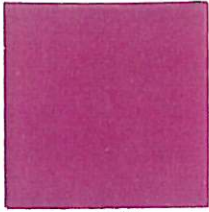


R65  
Maroon

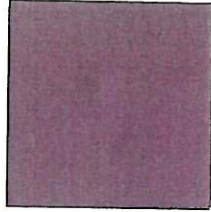
### The R (Red) Group



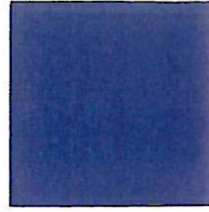
P11  
Magenta



P12  
Purple



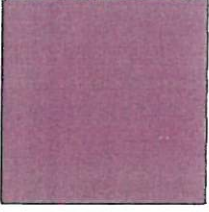
P13  
Violet



P14  
Blueberry



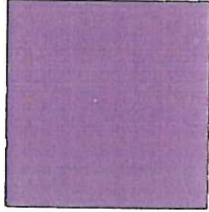
P21  
Sunset Pink



P22  
Cyclamen



P23  
Lilac



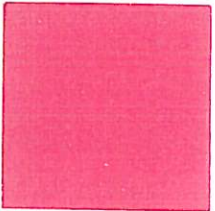
P24  
Jacaranda



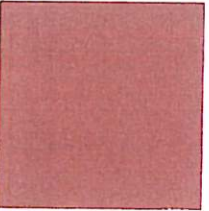
P31  
Dusty Pink



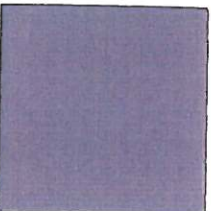
P33  
Ribbon Pink



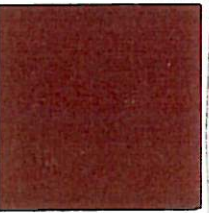
P41  
Erica Pink



P42  
Mulberry

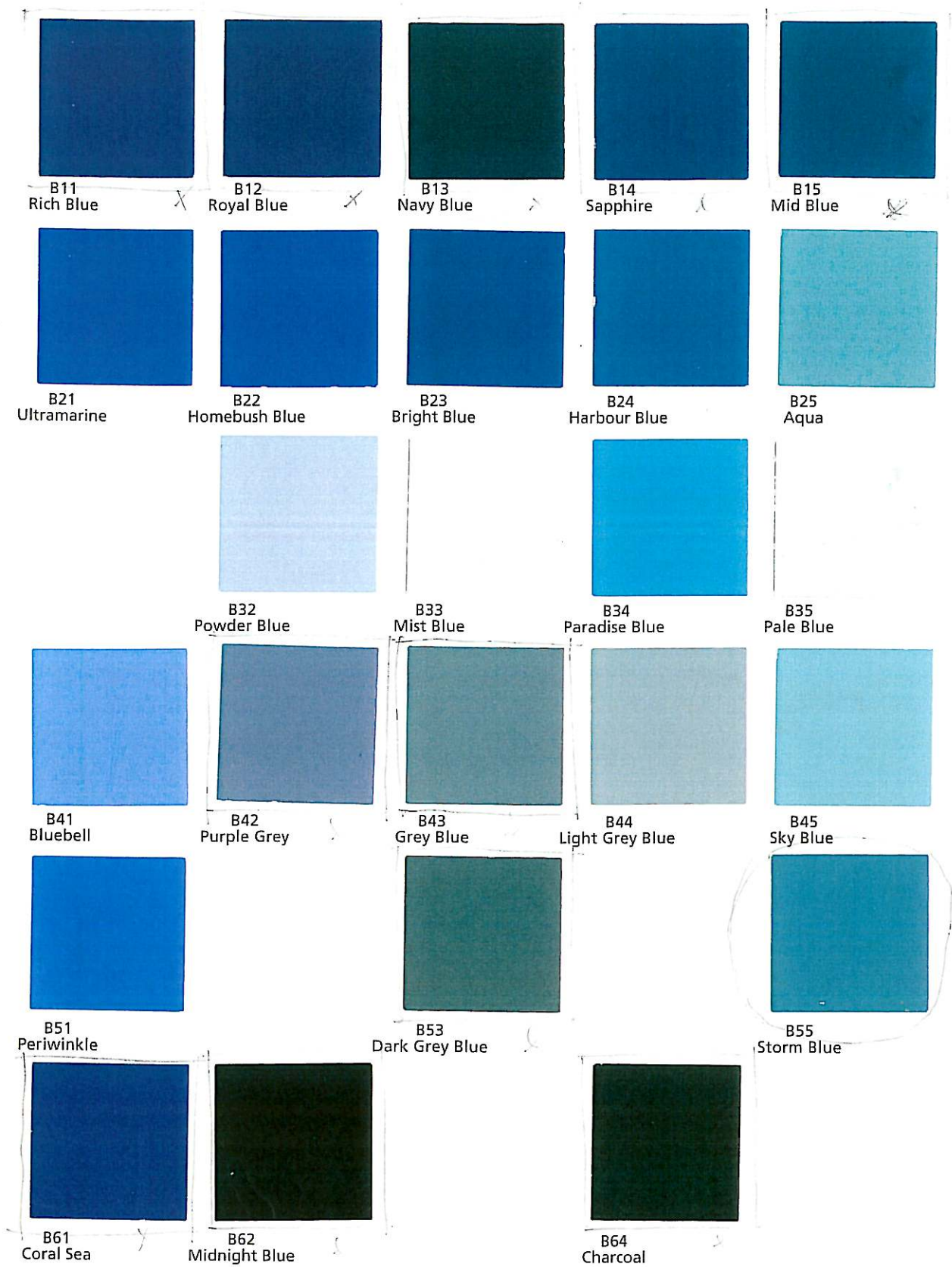


P43  
Wisteria



P52  
Plum

The P (Purple) Group



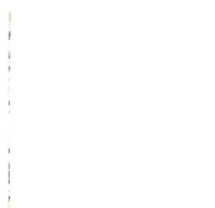
The B (Blue) Group



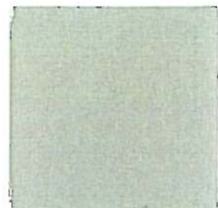
N11  
Pearl Grey



N12  
Pastel Grey



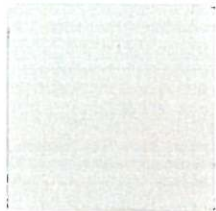
N14  
White



M N15  
Homebush Grey



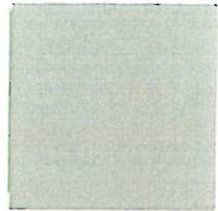
N22  
Cloud Grey



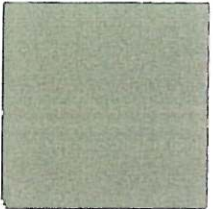
N23  
Neutral Grey



N24  
Silver Grey



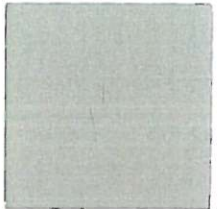
N25  
Birch Grey



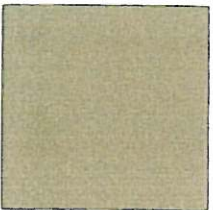
X D N32  
Green Grey



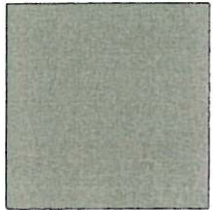
N33  
Lightbox Grey



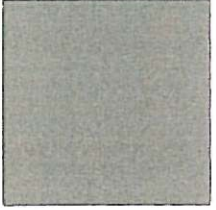
N35  
Light Grey



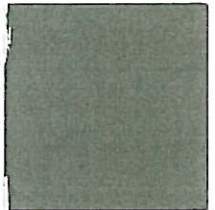
X D N41  
Oyster



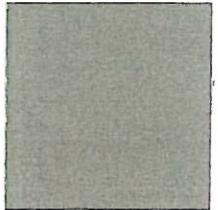
X D N42  
Storm Grey



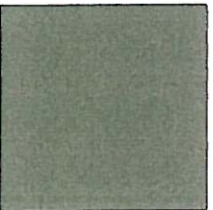
M N43  
Pipeline Grey



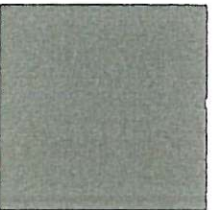
X D N44  
Bridge Grey



M N45  
Koala Grey



X D N52  
Mid Grey



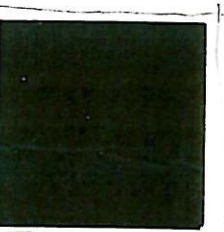
X D N53  
Blue Grey



X D N54  
Basalt



X D N55  
Lead Grey



N61  
Black



X D N63  
Pewter



X D N64  
Dark Grey



X D N65  
Graphite Grey

The N (Grey or Neutral) Group

# Standards Australia

Standards Australia is an independent not-for-profit organization, established in 1922. It operates formally under a Royal Charter as the Standards Association of Australia and has recognition as the peak Standards body in Australia through a Memorandum of Understanding with the Commonwealth Government. The essence of its operation is to bring together individuals and organizations committed to a common objective—to establish Australian Standards as national benchmarks for products and services so as to enhance quality of life and industry efficiency.

## **Australian standards**

Australian Standards are prepared by committees made up of experts from industry, governments, user groups and other sectors. The requirements or recommendations contained in published Standards are a consensus of the views of representative interests and also take account of comments received from other sources. They reflect latest scientific and industry experience. Australian Standards are kept under continuous review after publication and are updated regularly to take account of changing technology.

## **International involvement**

Standards Australia has an important role internationally. It is responsible for ensuring that the Australian viewpoint is considered in the formulation of International Standards and that latest international experience is incorporated in Australian Standards. This role is vital in assisting Australian industry to compete in international markets. Standards Australia is the national member of the International Organization for Standardization (ISO) and the International Electrotechnical Commission (IEC).

## **Membership and information**

A comprehensive range of services is provided to subscribing members of Standards Australia. Up-to-date information on latest local and international developments in standardization, priority access to publications, and credit facilities are some of these services. Standards Australia's large Information Centres in Sydney and Melbourne also provide reference access to Australian and international Standards as well as those applicable in overseas markets. Enquiries about subscribing membership and the work of Standards Australia are welcomed at the Head Office or any State office. A Catalogue of Australian Standards is also available at these offices.